

THE KEY DRIVERS OF INTERNATIONAL MOBILITY ARE PROFESSIONAL BUT VARY BY CAREER STAGE

Professional opportunities encourage mobility:

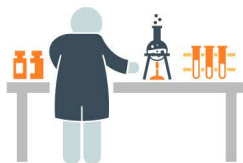
Training



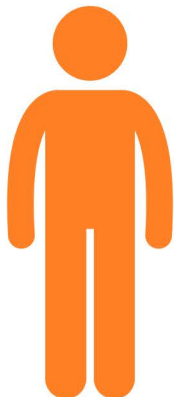
Jobs



Research environment



Professional motivations are more important than **personal drivers** in mobility of researchers overall



Early career researchers are driven by opportunities to **advance their career and develop their skills**



Personal factors are more important to more senior researchers alongside research autonomy and research culture

