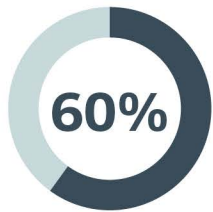


HAVING A PARTNER AND/OR CHILDREN ARE IMPORTANT BARRIERS TO MOBILITY



of respondents said that having a **long term partner** made them less likely to move between countries

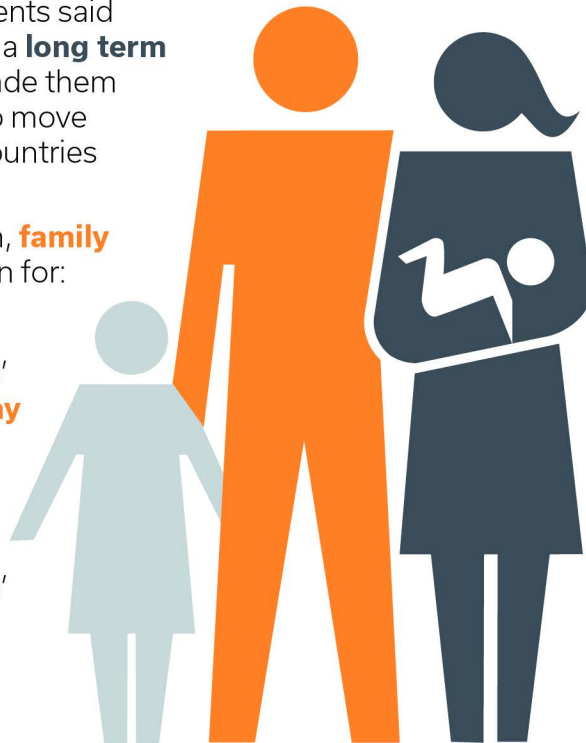
Amongst those with children, **family reasons** are cited as a reason for:



respondents' choice to **stay in the UK**



respondents' choice to **move back to the UK**



of respondents said that **having children** made them less likely to move between countries



Finding **suitable employment for a partner** is the most frequently cited barrier to mobility amongst those with a partner except for short term mobility

Read more:

International mobility of researchers—a survey of researchers in the UK
Susan Guthrie, Catherine Lichten, Emma Harte, Sarah Parks and Steven Wooding