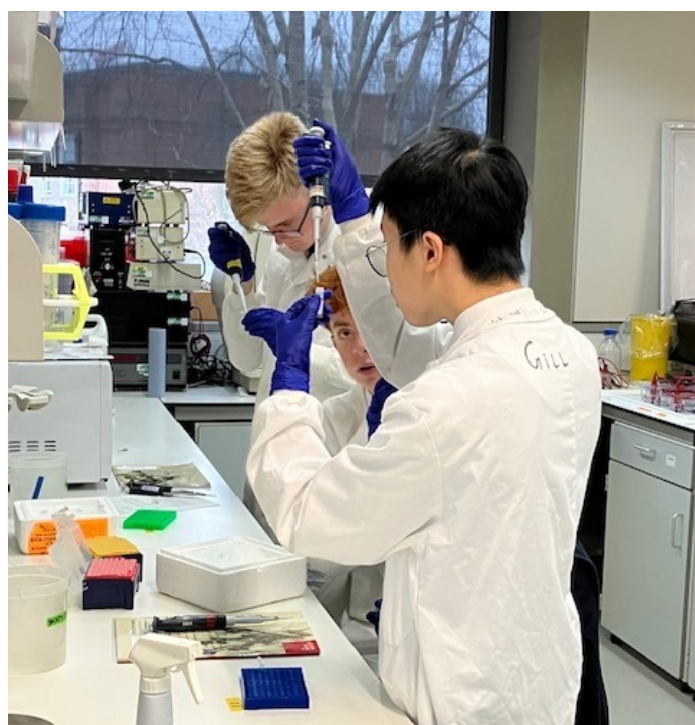
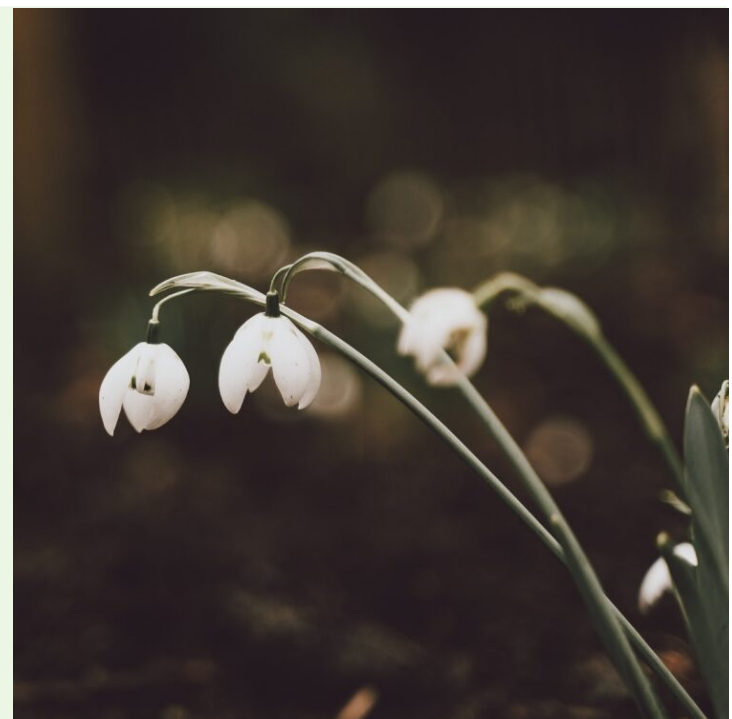
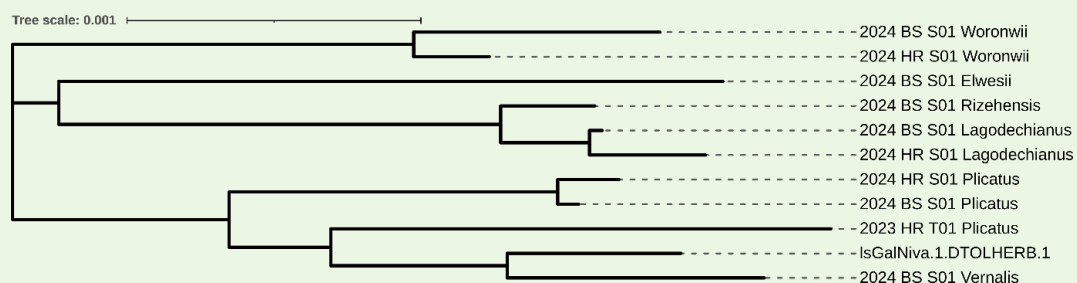


How are snowdrops related?

Multiple species of Snowdrop (*Galanthus*) chloroplast DNA have never been sequenced before. By using the DNA found in the chloroplast of different species of snowdrop, we analysed the DNA sequence, enabling us to produce a phylogenetic tree of the different species we tested.



By extracting the snowdrop chloroplasts, we were able to extract, isolate and sequence the DNA within using a MinION. We then used this data to scaffold the sequenced DNA to create the phylogenetic tree above. One of these species had never been sequenced before so we are excited to add this data and contribute to the scientific community.