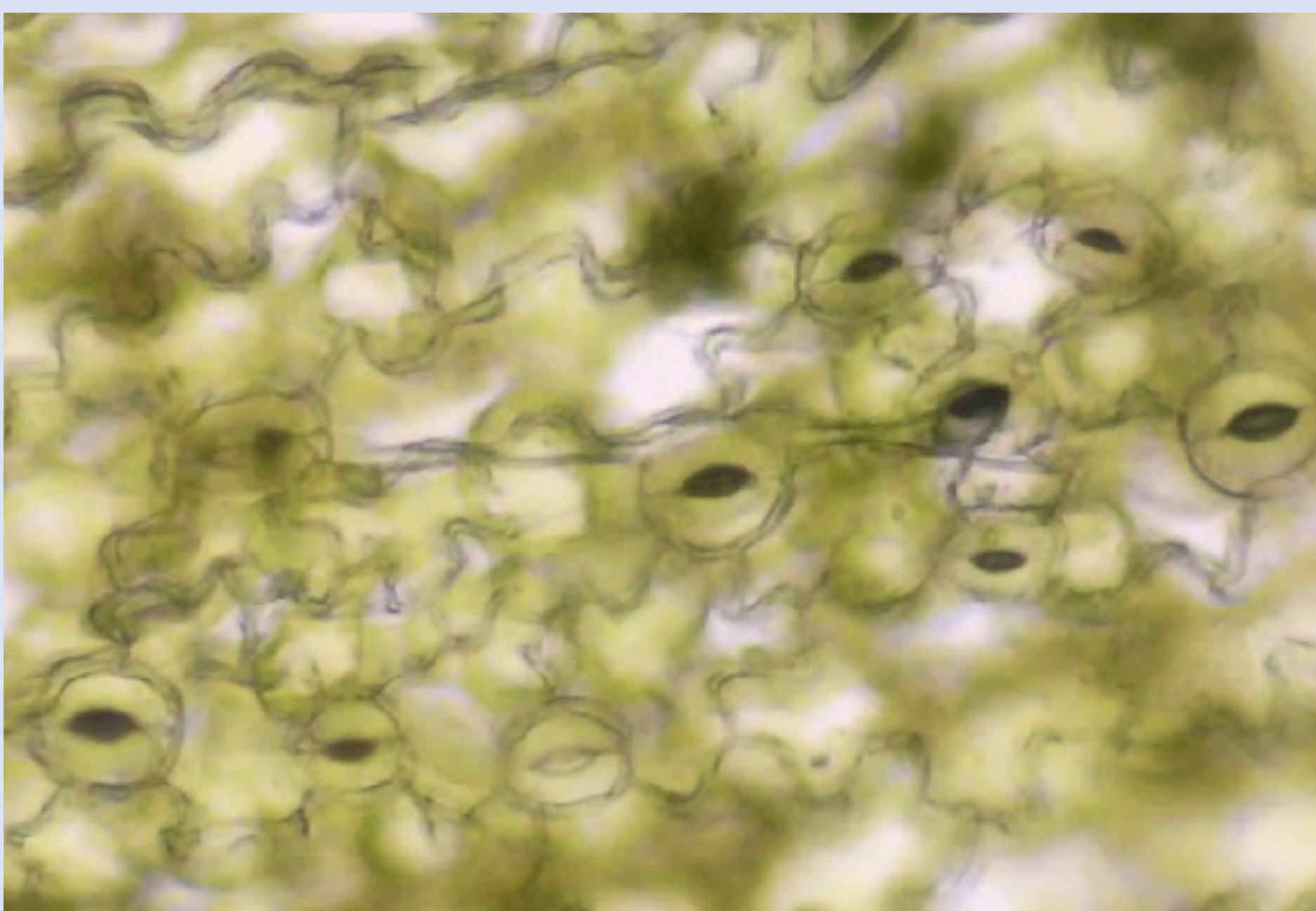


Will our mountain plants survive climate change?

Why have we asked this question?

Our world is warming, but how will this affect the plants that evolved since the last ice age? The UK is home to many different species that have evolved to be successful over thousands of years. We want to know if they will be able to cope with the rapid changes to air temperature and rainfall.



What have we found out?

It seems that there is a high probability that plants of the *Saxifraga* genus will not survive prolonged periods of drought and the stresses of higher temperatures. These plants were not seen to be pollinated by insects in our model, so we think that if native insects are lost, this will wipe out the species within a single generation.